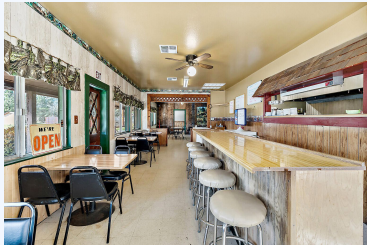


220175312, 8005 E EVANS CREEK RD,
ROGUE RIVER, OR 97537

For Sale. \$ 359,000.00



8005 E Evans Creek Rd, Rogue River, OR, 97537, Jackson County

Commercial Opportunity. Invest in your future on this 1.58 commercial acres; great corner location with high traffic. This was the "Wimer Cafe" at one time and seated 44. Set up as a cafe and some existing equipment there in as-is condition. Cinder Block construction building is 2100 sf. Partitioned room from previous Oregon Lottery business. There are 3 separate meters, 3 bathrooms and heat pump. Paved parking lot. Think of the possibilities here. Call, text or e-mail today for all the details! #220175312-m2o



Name	Suzie Matney
Address	1215 NE 6th St , Grants Pass, Oregon
Phone	541-660-9818
Mobile	541-660-9818

BASE INFORMATION:

Bath : 3

LAND INFORMATION:

Total acres : 1.58

Square feet : 2100

CONVENIENCE:

General Amenities: Well,

Appliance Amenities: Heat: Propane, Heat Pump, Air Conditioning,

Exterior Amenities: RV Parking, Fencing,

Interior Amenities: Vinyl

Flooring, Office, Ceiling Fan(s),

Security Amenities: Smoke/Co2 Detector,