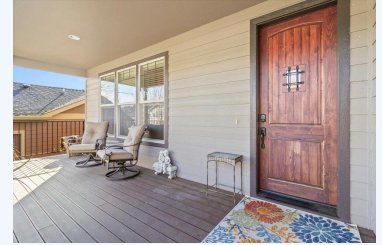


220175771m2o, 4457 PARK RIDGE DR,
MEDFORD, OR 97504

For Sale. \$ 649,950.00



4457 Park Ridge Dr, Central Point, OR, 97504, Jackson County

Beautiful 2670 sf, 4 bd, 2.5 ba East Medford home offering an 830sf finished daylight basement, ADU style flex space. #220175771-m2o

Beautiful East Medford home, with brand new carpet throughout! HVAC serviced and new smoke/co detectors. The main home offers 2670 sqft with 4bdrm 2.5ba. 830sqft finished day light basement, ADU style flex space. 1 bedroom, 1 full bath with it's own HVAC system, w/living room and separate access entrance from back yard. Great flex space/on site office/hobbies etc. Open Concept living with vaulted ceilings, granite, carpet and tile, large kitchen with pantry, stainless steel appliances & eating bar. Owner's suite is spacious and the ensuite bathroom features dual sinks, walk in closet & walk in shower. The upstairs deck & bedroom have beautiful views of mountains and valleys. The subdivision includes Oregon Hills park with splash park, walking trails, basketball courts and playground. Call, text or e-mail today for all the details! #220175771-m2o



Name	Tammie StClair
Address	701 E Jackson Oregon
Phone	541-941-3478
Mobile	541-941-3478

BASE INFORMATION:

Bed	: 5
Bath	: 3.5

LAND INFORMATION:

Subdivision	: Forest Ridge At Vista Pointe
Total acres	: 0.15
Square feet	: 2670

BUILDING INFORMATION:

Year Built	: 2013
Number of Floors	: 3
Floor area (Lower)	: 830

CONVENIENCE:

General Amenities: Garage Door Opener,City Water,City Sewer,Cable / Satellite TV / Broadband Internet Avail,

Accessibility Amenities: Walk-in Shower,

Appliance Amenities:

Washer,Refrigerator,Range/Oven Electric,Microwave,HVAC System,Gas Heat,Disposal,Forced Air Heat/Air,Dryer,Dishwasher,Central Air,Air Conditioning,

Community Amenities:

Playground,Park,Bike Paths / Walking / Hiking Paths,Basketball Court,

Exterior Amenities:

Views,Lawn,Landscaped,In-ground Sprinklers,Garage,Fencing,Deck/Patio - Covered ,Deck/Patio,

Interior Amenities: Walk-in Shower,Walk-in Closet(s),Vaulted Ceiling(s),Tile Flooring,Pantry,Open Floor Plan,Laundry Room,Great Room,Granite Counters,Fireplace - Gas,Daylight Basement,Celing Fan(s),Carpeted Floors,Breakfast / Eating Bar,Basement-Finished,

Security Amenities: Smoke/Co2 Detector,

