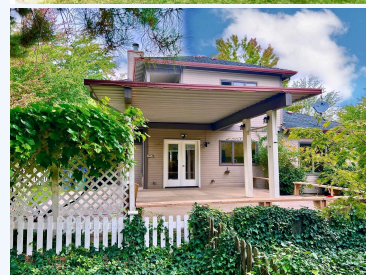


# 22017255, 102 N WIGHTMAN STREET,  
ASHLAND, OR 97520, #22017255,  
MOVE2OREGON

Pending. \$ 469,000.00



## 102 N Wightman Street, Ashland, OR, 97520, Southern Oregon

MILL POND GARDEN PARADISE! This 3-bedroom home with a premium location next to Mill Pond Garden has some of the BEST views in the community! Large windows bathe the interior in natural garden light, providing tranquil space - both indoors and out - to take in the surrounding beauty of Mill Pond. Imagine evenings under the oversized, covered back porch with built in benches...or an evening beside the cozy fireplace. The kitchen, which provides ample counter space and storage, features a garden view and opens to the designer-lit dining area. French Doors open from the dining to the garden areas and promise to be a gathering point for family and friends. Beyond the beauty, the open floor plan has the primary en-suite bedroom, bath, and laundry downstairs. There are unique built-in features in the upstairs bedrooms - a skylight, vanity area, window seat, and even a private balcony with garden view! This sweet little vision just had a makeover - new paint, fixtures, she's a beauty! #22017255-m2o. Click on photo for more pics.



|         |                    |
|---------|--------------------|
| Name    | <b>Kat Soditus</b> |
| Address | Gold Hill, Oregon  |
| Phone   | 541-502-9675       |
| Mobile  | 541-502-9675       |

### BASE INFORMATION:

|      |     |
|------|-----|
| Bed  | : 3 |
| Bath | : 2 |

### LAND INFORMATION:

|             |             |
|-------------|-------------|
| Subdivision | : Mill Pond |
| Total acres | : 0.11      |
| Square feet | : 1361      |

### BUILDING INFORMATION:

|                  |                           |
|------------------|---------------------------|
| House Style      | : 2-Level<br>Contemporary |
| Year Built       | : 1987                    |
| Number of Floors | : 2                       |

### CONVENIENCE:

**General Amenities:** Cable / Satellite TV / Broadband Internet Avail, City Sewer, City Water, Garage Door Opener,  
**Appliance Amenities:** Air Conditioning, All Appliances, Heat - Wood, Heat Pump,  
**Community Amenities:** Playground,  
**Exterior Amenities:** Deck/Patio - Covered, Fencing, Garage, Garden, Pond - Year Round,  
**Interior Amenities:** Built-Ins, Carpeted Floors, Fireplace-Wood, Laundry Room, Skylights,  
**Security Amenities:** Smoke/Co2 Detector,